

Accidents, Happenstance, Serendipity

Jay Turnbull

Chit Chat Club
November 13, 2018

Three Princes of Serendip



'Serendip' is the modern Sri Lanka.



www.lamag.com

A Place of Imagination



Left: Map, published in Paris in 1705, showing California depicted as an island.

Right: The Pacific Current, shown as black arrows, and winds from the northwest impede progress north.

State of Nature



www.emerginginvestigators.org



www.worldwar1centennial.org

Earthly Paradise

Drawing is probably by L. Choris, artist from a Russian expedition to San Francisco Bay on the ship Rurik, 1816.

Contact with Europeans



www.spainculture.us



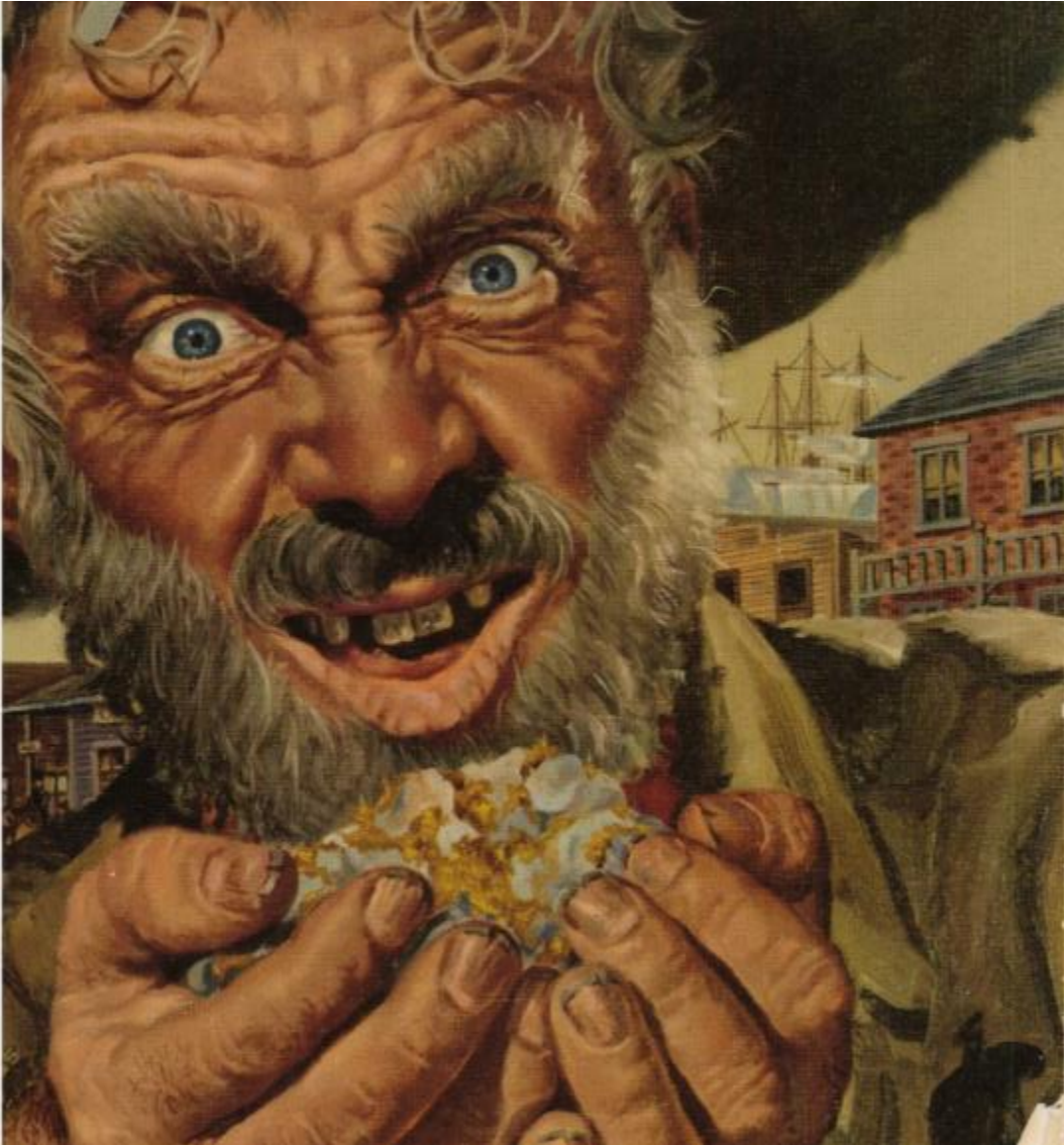
The Californios

U.S. Territorial Acquisitions, 1803–1853



The U.S. Arrives

By 1850, the extent of the 'lower 48' United States had been determined, either by purchase, treaty, or war.

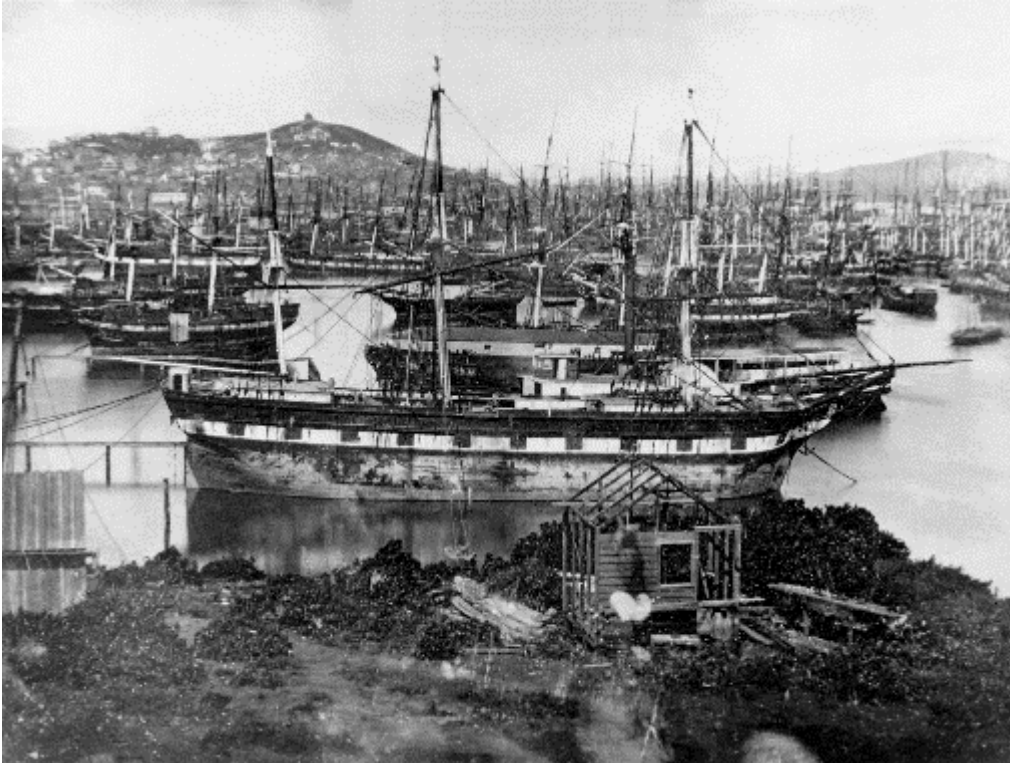


Vigilante Publications, 1949

Gold!

Painting is from "San Francisco Pay Dirt: The Romance of a Great City," published 1949. Painting by Vaughan Bass.

Money, Movement and Industry



www.theguardian.com



www.fineartamerica.com

Left: Masts in Yerba Buena Cove, 1849.

Right: Clipper ship *Flying Cloud*, launched 1851.

1850



explore.museumca.org

George Henry Burgess, 1878. Painted from sketches and watercolors made in 1850. Courtesy Montgomery Gallery.

Chit Chat Club | November 13, 2018



www.sfpl.org

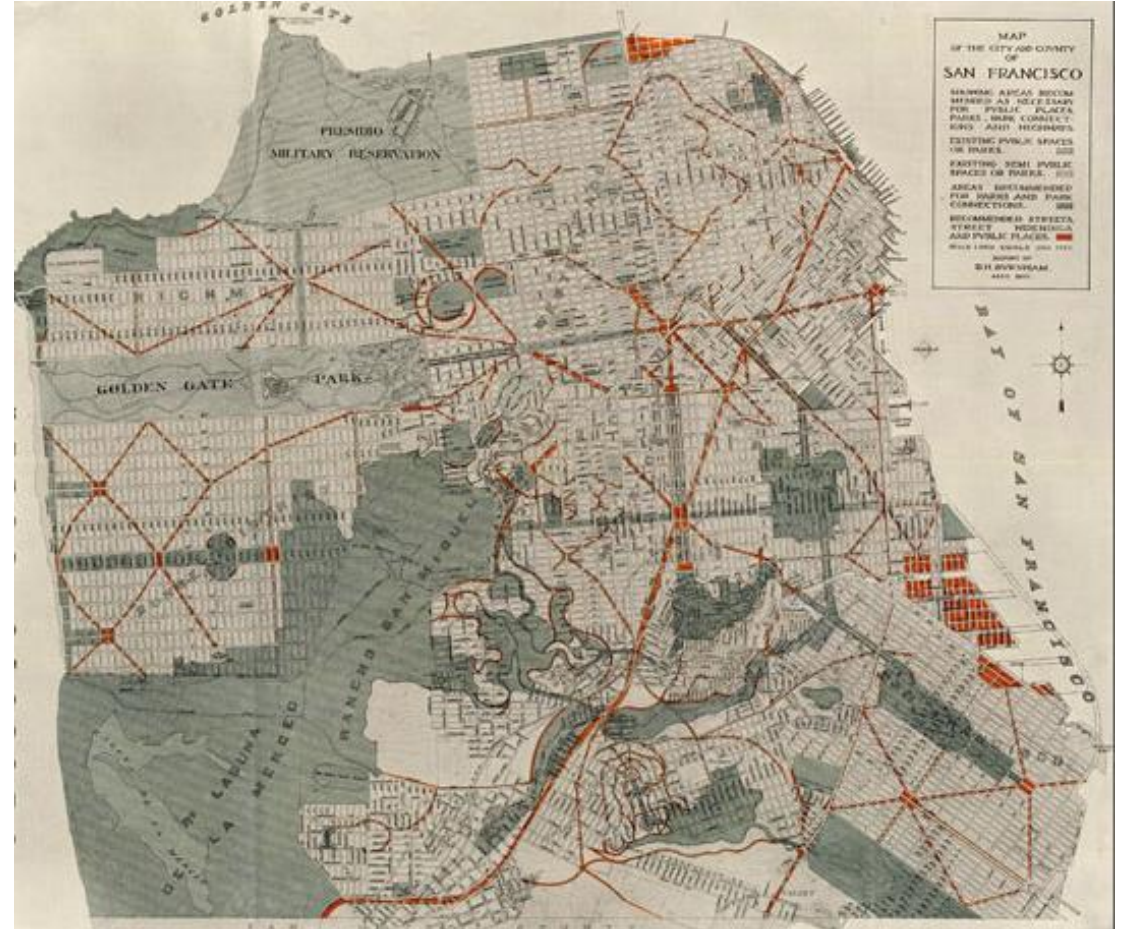


Left: Horsecar, 1870s.

Right: Cable cars; first line was on Clay Street, 1873.



www.flickr.com/photos/bennetthall



www.chicagocart.com

Left: California Midwinter International Exposition, 1894.

Right: The 1905 'Burnham Plan,' showing proposed boulevards in red, proposed parks in dark green.

Disaster & Rebuilding



www.sfmuseum.org

Painted by William Coulter, 1906.

Chit Chat Club | November 13, 2018



Palace Hotel, 1909

‘Main Court’ of the Palace Hotel, rebuilt by 1909. Architects: Trowbridge & Livingston, New York. Supervisor of construction: George Kelham.

1915



Photo Courtesy: Richard Barnes

Left: City Hall was almost completed for the Panama Pacific International Exposition. Right: Palace of Fine Arts.



Photo Courtesy: Henrick Kam



Photo Courtesy: Sherman Takata

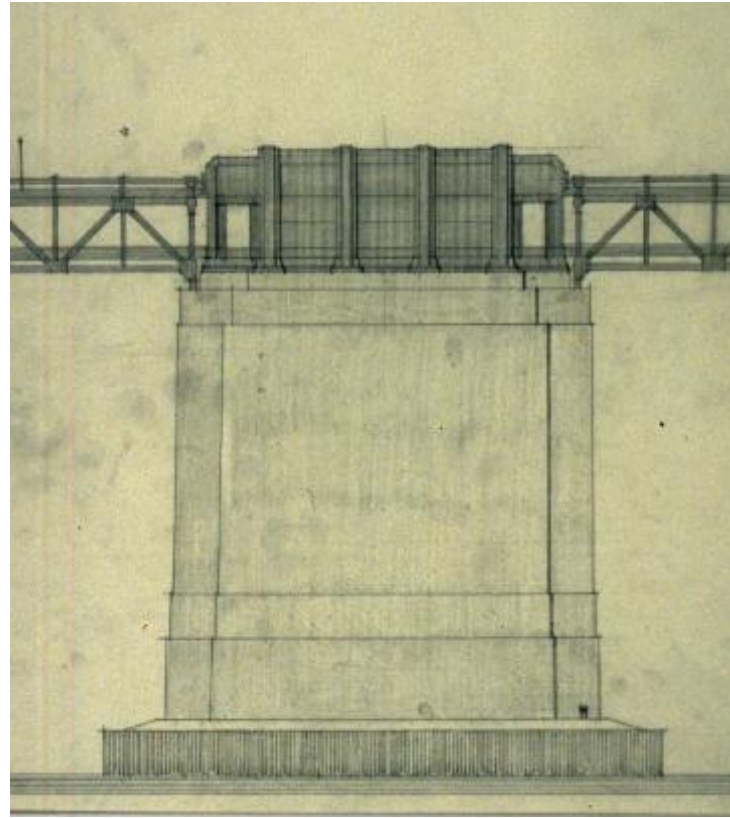
Skyscrapers & Bridges

Left: Pacific Telephone Building, 1925. Architects: Miller & Pflueger.

Right: Hallidie Building, 1918. Architect: Willis Polk.



en.wikipedia.org



art.famsf.org



www.accessmagazine.org

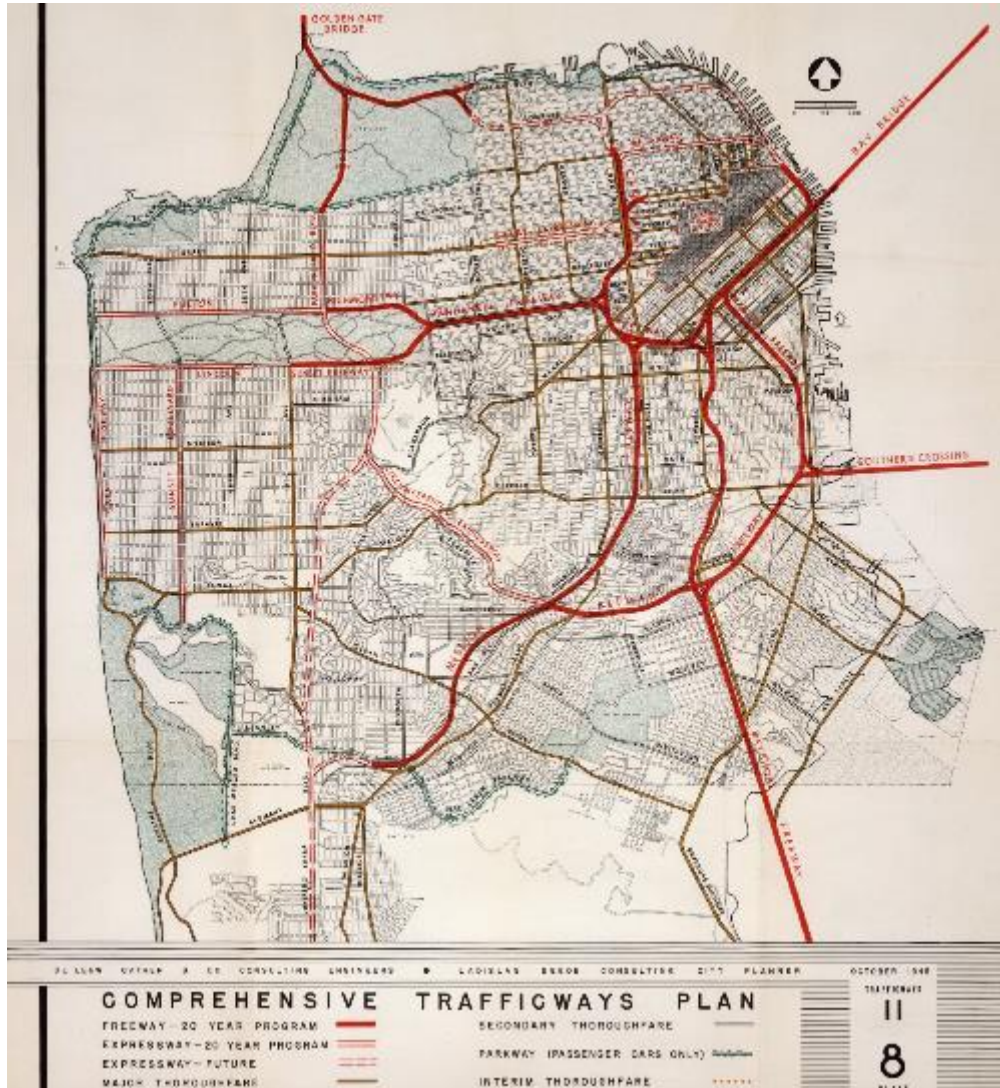
Left: San Francisco-Oakland Bay Bridge (Charles Purcell), completed 1936.
Center: One of Timothy Pflueger's sketches.
Right: Golden Gate Bridge (Joseph Strauss), completed 1937.

War & Growth



www.sfpl.org

Left: Trafficways proposal by DeLeuw Cather, 1948.
Right: Demolition, 1950s.



www.flickr.com/photos/walkingsf

Today's City



www.flickr.com